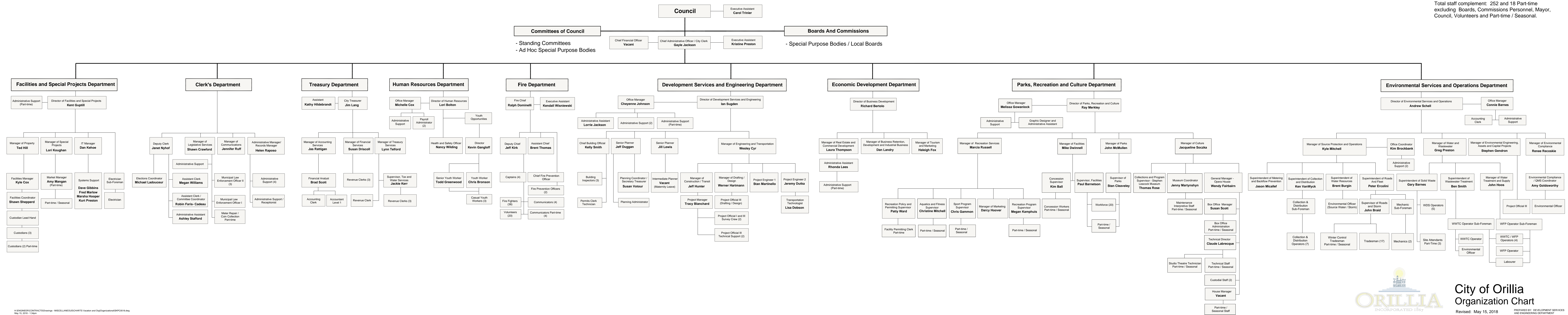


Total staff complement: 252 and 18 Part-time excluding Boards, Commissions Personnel, Mayor, Council, Volunteers and Part-time / Seasonal.



City of Orillia
Organization Chart

Revised: May 15, 2018

PREPARED BY: DEVELOPMENT SERVICES AND ENGINEERING DEPARTMENT
ACAD FILE: SKPC0518.DWG